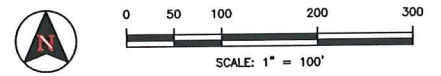


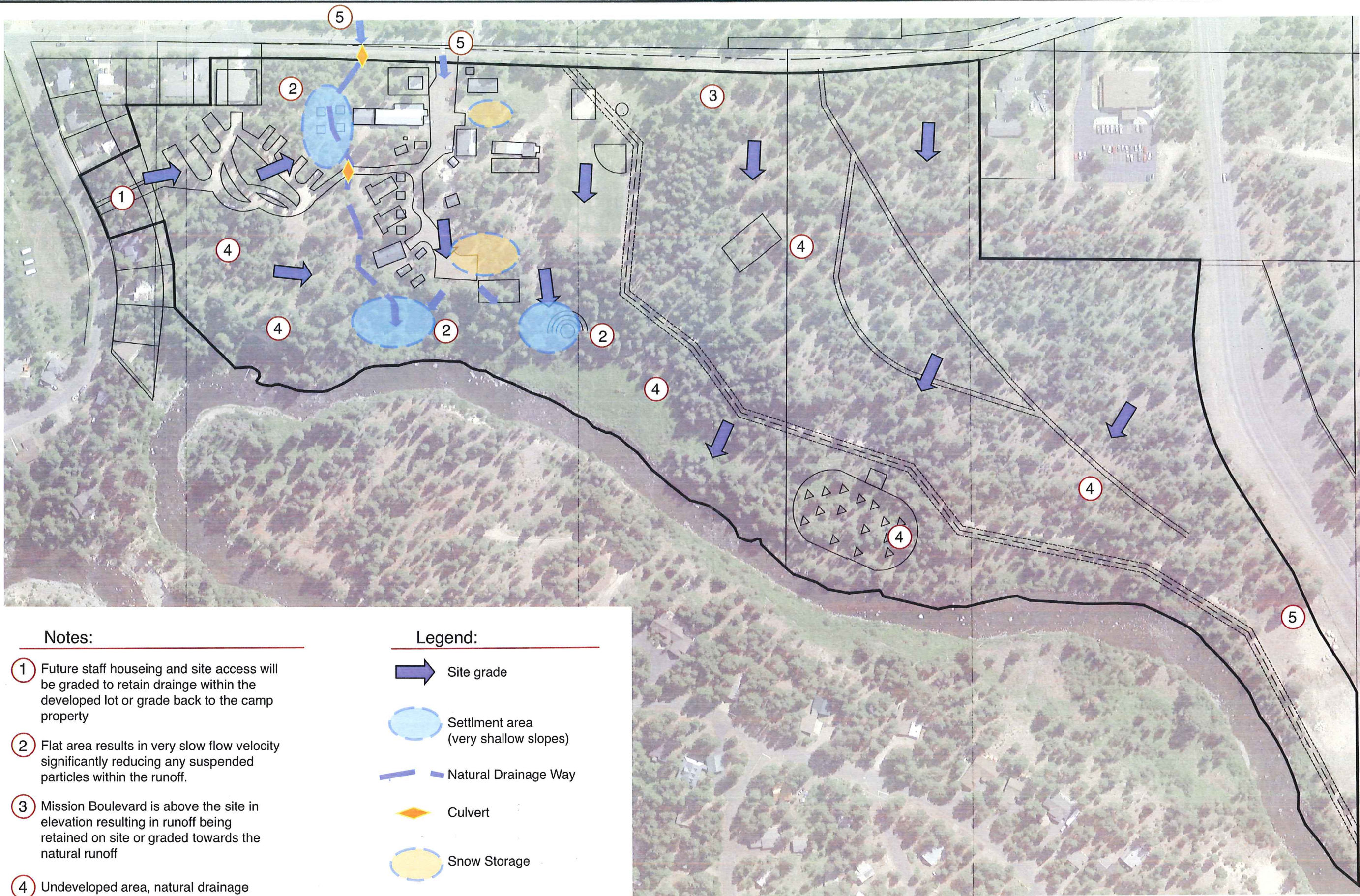
KEY NOTES		
EXISTING	PROPOSED	FUTURE
① CHURCHILL LODGE	⑤⑩ RESIDENCE HOUSING	⑤① CHAPEL
② BATH HOUSE/LAUNDRY	⑤⑪ OFFICE & MEETING ROOM	⑤② FUTURE SHOP
③ BRADLY CHAPEL	⑤⑫ RECREATION BUILDING	⑤③ TENT VILLAGE WITH COVERED PICNIC AREA
④ JOSHUAS RETREAT CENTER	⑤⑬ RELOCATED DUMPSTER	⑤④ RESTROOM
⑤ RETREAT CENTER	⑤⑭ PARKING LOT	⑤⑤ LODGE WITH ROOMS, KITCHEN & DINNING AREA
⑥ SHOP/MAINTAINANCE	⑤⑮ NEW CANTEEN	⑤⑥ FIRE PIT
⑦ TIMOTHY CABINS	⑤⑯ BASKETBALL COURT	⑤⑦ ADDITIONAL RV LOOP SPACES
⑧ SMALL CABINS		⑤⑧ RELOCATE SMALL CABINS ⑧
⑨ RV LOOP		⑤⑨ CABINS
⑩ CANTEEN		⑤⑩ INDOOR RECREATION AREA
⑪ BELL TOWER		
⑫ OFFICE		
⑬ VOLLEY BALL COURT		
⑭ PLAYGROUND		
⑮ SLED HILL		
⑯ DUMP STATION		
⑰ FIRE PIT		
⑱ COVERED PICNIC AREA		
⑲ RECREATION CENTER		
⑳ PAINTBALL COURSE		
㉑ BASEBALL DIAMOND		

NO	REVISIONS	FILE NAME				
		DESIGNED	DRAWN	CHECKED	APPROVED	
		#####	#####	#####	#####	
		#####	#####	#####	#####	
		#####	#####	#####	#####	
		#####	#####	#####	#####	
		#####	#####	#####	#####	
		#####	#####	#####	#####	
		#####	#####	#####	#####	
		#####	#####	#####	#####	
		#####	#####	#####	#####	

EXHIBIT FOR
CAMP PINEWOOD



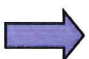




L:\188411_BKG\GROUND\188411_NG\2_ACADEMY\MODEL\CAMP_PINEWOOD.DWG - 5/17/2016



Notes:

- ① Future staff housing and site access will be graded to retain drainage within the developed lot or grade back to the camp property
- ② Flat area results in very slow flow velocity significantly reducing any suspended particles within the runoff.
- ③ Mission Boulevard is above the site in elevation resulting in runoff being retained on site or graded towards the natural runoff
- ④ Undeveloped area, natural drainage
- ⑤ Runoff enters site from neighboring property

Legend:

-  Site grade
-  Settlement area (very shallow slopes)
-  Natural Drainage Way
-  Culvert
-  Snow Storage

NO.	REVISIONS	APPROVALS					
		DATE	DESIGNED	DRAWN	CHECKED	APPROVED	DATE

EXHIBIT FOR
CAMP PINEWOOD
Drainage Plan

